



## THERMAL BREAK REQUIREMENT ON STEEL FRAMED BUILDINGS

### CHANGES TO THE BUILDING CODE OF AUSTRALIA (BCA)

Changes introduced in BCA 2006 affect the installation of Fibre Cement products on steel framed buildings.

The focus on thermal efficiency, including the introduction of Five Star energy ratings in VIC, ACT, WA and SA, and the new energy efficiency requirements, affect residential and commercial buildings.

Thermal breaks may now be required for steel framed buildings using lightweight cladding. Cladding may include, but is not limited to, Texture Base Sheet, Rendaline<sup>TM</sup>, Weatherboards and Cladding Sheet.

Where a thermal break is used in accordance with the BCA provisions, it must:

- consist of a material with an R-Value of not less than 0.2, and
- be installed between the metal frame and the external cladding.

This change came into effect in May 2006 for new buildings.

### THE PURPOSE OF A THERMAL BREAK

A thermal break addresses the issue of thermal bridging.

Thermal bridging is a leakage of heat through a conducive path such as metal framing. Thermal bridging can lead to a downgrade in the R-Value of a wall and can cause moisture problems for the frame and internal linings.

A thermal break is to ensure that the thermal performance of a metal framed wall is comparable to that of a similarly clad timber framed wall

### WHAT DO WE RECOMMEND?

CSR Gyprock and Fibre Cement now has a product suitable for use as a thermal break in steel framed walls lined with Cemintel<sup>TM</sup> claddings.

The new product is simple to install and meets the BCA 2006 requirements. The product is thinner than deemed to satisfy solutions and is easy to use on site.

Screw sizes should be increased to account for the 8.64mm thermal break thickness i.e. 35mm WingTek or 30mm FibreZip.

# THERMAL BREAK ON STEEL FRAMES

## NEW PRODUCT INFORMATION – CEMINTEL™ THERMAL BREAK FOAM

<b>Description:</b>	Thermal Break Strips 8.64mm x 35mm x 15.25m. Pk 30
<b>CSR Order Code:</b>	82381
<b>Thickness:</b>	8.64mm
<b>Width:</b>	35mm
<b>Length:</b>	15.25m
<b>R-Value:</b>	R 0.21

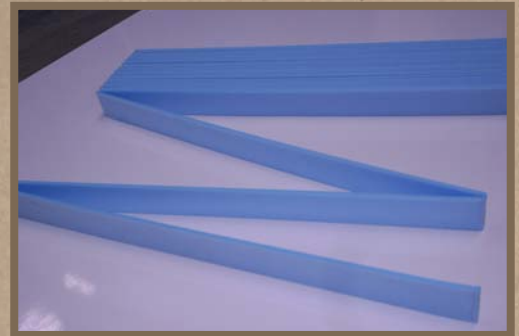
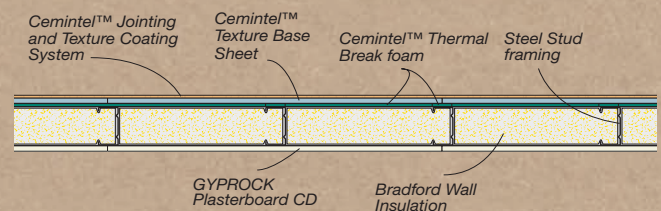
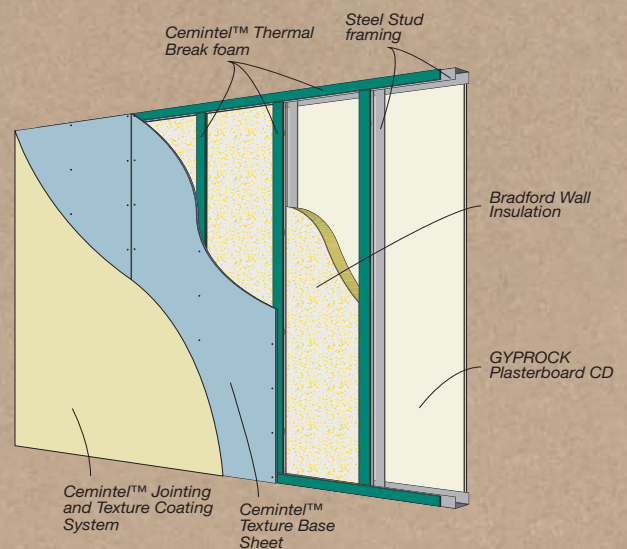


Image is one unit, a pack comprises 30 units.

## INSTALLATION

Attach break to steel framing. Use button head screws, or an adhesive such as CSR Stud Adhesive, at approximately 1.0m centres.



## CEMINTEL™ FIBRE CEMENT SYSTEMS

**Website:** [www.cemintel.com.au](http://www.cemintel.com.au)

**Phone:** 1300 CEMINTEL

**Fax:** 1800 646 364

Published by CSR Building Products Limited ABN 55 008 631 356