



Certificate of Conformity

Certification Body:



SAI Global Certification Services Pty Limited

(ACN 108 716 669) Operating as "Intertek & Intertek SAI Global"

JAS-ANZ Accreditation No. Z1440295AS

Address: Level 7 Suite 7.01. 45 Clarence Street, Sydney NSW 2000 Australia

Website: www.saiglobal.com



Certificate Holder:

CSR Building Products Limited (Trading as CSR Cemintel)

Trinity 3, 39 Delhi Road, North Ryde, NSW, 2113, Australia
Phone: 1800 633 826

Website:

<https://www.csr.com.au/About-Us/Contact-Us>

Certificate number: CM20196

THIS TO CERTIFY THAT

CEMINTEL Commercial ExpressPanel® Wall Cladding System

Type and/or use of product:

CEMINTEL Commercial ExpressPanel® is an external walling system for residential and commercial buildings. Suitable for use on all building classes where metal top hats can be fixed either to steel stud framing, timber stud framing, or to masonry and concrete substrates.

For Class 2 to Class 9 buildings, CEMINTEL Commercial ExpressPanel® walling system is suitable for only Type C Fire-Resisting Construction when fixed to timber stud framing.

Description of product:

CEMINTEL Commercial ExpressPanel® is 9mm thick, pre-primed, square edged, compressed fibre cement panel. The panels are available in a range of sizes and can be either factory painted or finished onsite.

The wall system components & accessories are detailed in the CEMINTEL COMMERCIAL EXPRESSPANEL® -EXTERNAL Design & Installation Guide-02/2024 REV02.

COMPLIES WITH THE FOLLOWING BCA PROVISIONS AND STATE OR TERRITORY VARIATION(S)

BCA 2022

	Volume One		Volume Two and ABCB Housing Provisions	
Performance Requirement(s)	B1P1(1) limited to (2)(a) & (c)	Structural reliability (limited to self-weight and wind actions)	H1P1(1) limited to (2)(a) & (c)	Structural stability and resistance (limited to self-weight and wind actions)
	F3P1	Weatherproofing	H2P2	Weatherproofing
Deemed-to-Satisfy Provision(s):	C2D2 including Specification 5 (as applicable)	Fire resistance and stability – Type of construction required (FRL 120/120/120, or -/180/180 when used in a system with Fyrchek™ MR plasterboard, refer	H3D2(1)(a) & (d)	General concession — Materials may be used wherever a non-combustible material is required
			H3D3 and Clause 9.2.3(2)(a) of ABCB Housing Provisions	Fire separation of external walls – Construction of external walls (FRL 60/60/60 when used in a system with Fyrchek™ MR plasterboard, refer below to Section A3 of this certificate)

SAI Global Certification Services

Calin Moldovean
President, Business Assurance
SAI Global Assurance

James Deters – Unrestricted Building Certifier

Date of issue: 01 May 2024

Date of expiry: 26 March 2026



		below to Section A3 "A3 Product specification" of this certificate)	H7D4(2)(a)	Construction in bushfire-prone areas (refer to Limitations and conditions below)
	C2D10(6)(a) & (d)	General concession – Materials may be used wherever a non-combustible material is required		
	C2D11(1)(b) including Specification 7 Clause S7C4	Fire resistance and stability – Fire hazard properties		
	G5D3	Construction in bushfire-prone areas – Protection — residential buildings (refer to Limitations and conditions below)		
State or territory variation(s):	SA C2D2	Fire resistance and stability – Type of construction required	NSW H7D4	Construction in bushfire-prone areas (refer to Limitations and conditions below)
	NSW C2D11	Fire resistance and stability – Fire hazard properties		
	NSW G5D3	Construction in bushfire-prone areas – Protection — residential buildings (refer to Limitations and conditions below)		

SUBJECT TO THE FOLLOWING LIMITATIONS AND CONDITIONS AND THE PRODUCT TECHNICAL DATA IN APPENDIX A AND EVALUATION STATEMENTS IN APPENDIX B

Limitations and conditions:

1. CEMINTEL Commercial ExpressPanel® Wall Cladding System with Fyrchek® MR Plasterboard can be used where the required Fire Resistance Levels (FRLs) does not exceed 120/120/120 or -/180/180 as specified in the NCC 2022 BCA Volume One Specification 5. The installation must be in accordance with the relevant details contained within the System Engineering section of CEMINTEL COMMERCIAL EXPRESSPANEL® -EXTERNAL Design & Installation Guide-02/2024 REV02. and system specifications details shown below in section "A3 Product specification".
2. For Class 2 to Class 9 buildings, CEMINTEL Commercial ExpressPanel® Wall Cladding system is suitable for only Type C Fire-Resisting Construction when fixed to timber stud framing.
3. For type C Fire-Resisting Construction, CEMINTEL Commercial ExpressPanel® Wall cladding System has not been assessed against the requirements of Specification 5 Clause S5C24(1)(c) of a fire wall or an internal wall bounding a sole-occupancy unit or separating adjoining units.
4. CEMINTEL Commercial ExpressPanel® when used as an internal wall lining achieved a Group Number 1 and Smoke Growth Rate Index (SMOGR_{RC} 0.2 m²s⁻²x1000) as determined in accordance with AS 5637.1:2015.
5. The following were the only wall wraps assessed against the requirements of C2D10(6)(f) for sarking-type material:
 - a) Bradford Thermoseal® Wall Wrap.
 - b) Bradford Thermoseal® Firespec Wall Wrap.
 - c) Enviroseal ProctorWrap Commercial Wall (CW).
 - d) Enviroseal ProctorWrap Residential Wall (RW).
 - e) Enviroseal Residential Wall Plus (RW Plus)Other wall wraps may also be used provided they comply with the requirements of C2D10(6)(f) for sarking type materials.
6. The following were the only insulations assessed against the requirements of C2D10(1) for non-combustible building elements:
 - a) 75 Gold Batts R1.5 at 8.76kg/m³ density.
 - b) 75 Gold Batts R2.0 at 17.3kg/m³ density.
 - c) 90 Gold Batts R2.0 at 10.4kg/m³ density.
 - d) 90 Gold Batts R2.5 at 20.5kg/m³ density.
 - e) 90 Gold Batts R2.7 at 33.1kg/m³ density.

Building classification/s:

- Volume 1 – Class 2 to Class 9 buildings
Volume 2 – Class 1 and Class 10(a) buildings

7. CEMINTEL Commercial ExpressPanel[®] Wall cladding System shall be used for its intended purpose. For further information on limited applications of the product, refer to the following CEMINTEL Commercial ExpressPanel[®] Guides as relevant:
 - a) CEMINTEL COMMERCIAL EXPRESSPANEL[®] -EXTERNAL Design & Installation Guide-02/2024 REV02,
8. CEMINTEL Commercial ExpressPanel[®] Wall cladding System has been tested to the requirements of AS/NZS 4284:2018 in accordance with the NCC verification methods and has been determined to achieve compliance with F3P1 when installed as a pressure equalised system in applications where an external wall of the building also:
 - a) has a risk score of 20 or less determined in accordance with Table F3V1a or H2V1a, of the BCA, as appropriate; and
 - b) has a maximum Design Ultimate Limit State wind pressure of ± 2.5 kPa using the Cemintel soft air barrier system incorporating Enviroseal CW-IT wall wrap; and
 - c) has a maximum Design Serviceability Limit State wind pressure of +2.5 kPa using a Cemintel Rigid Air Barrier system (Cemintel 6mm thick fibre cement RAB sheet); and
 - d) has a maximum Design Serviceability Limit State wind pressure of +1.19 kPa and -1.79 kPa using Enviroseal CW when not detailed as an air barrier.
Other wall wraps may also be used, provided they have equivalent or better strength properties than Enviroseal CW / CW-IT when determined in accordance with AS/NZS 4200.1:2017.
9. CEMINTEL Commercial ExpressPanel[®] Wall Cladding System has been evaluated for use in all Australian wind zones up to and including N6 and Cyclonic C4 in accordance with AS 4055 and for ultimate wind pressures up to 7.0 kPa under AS/NZS 1170.2 including cyclonic zones when fixed to steel framing with Cemintel Rigid Air Barrier. Construction details and fixing must follow the relevant details contained within the System Engineering section of CEMINTEL COMMERCIAL EXPRESSPANEL[®] -EXTERNAL Design & Installation Guide-02/2024 REV02.
10. CEMINTEL Commercial ExpressPanel[®] Wall Cladding System is not certified for either energy efficiency or acoustic performance.
11. CEMINTEL Commercial ExpressPanel[®] Wall Cladding System is suitable for use on buildings located in a designated Bushfire-Prone Area subject to a Bushfire Attack Level (BAL) up to and including BAL-40 when constructed in accordance with AS 3959:2018 (subject to state and territory variations) for a Class 1 building, a Class 2 building, a Class 3 building, or a Class 10a building or deck immediately adjacent or connected to such a building or part.
12. In NSW, CEMINTEL Commercial ExpressPanel[®] Wall Cladding System is suitable for use on buildings located in a designated Bushfire-Prone Area:

Certificate of Conformity

- a) For a Class 1 building, a Class 2 building, a Class 3 building, a Class 4 part of a building, or a Class 10a building or deck immediately adjacent or connected to such a building or part when constructed in accordance with AS 3959:2018 except as amended by Planning for Bush Fire Protection for BAL-40.
- b) For a Class 9 buildings located in an area subject to a Bushfire Attack Level (BAL) not exceeding BAL-12.5 determined in accordance with AS 3959.
13. In VIC, CEMINTEL Commercial ExpressPanel[®] Wall Cladding System is suitable for use on Class 9(a) healthcare buildings, Class 9(b) early childhood or school buildings, Class 9(c) residential care buildings or Class 4 parts of buildings associated with the preceding classifications that are in designated bushfire prone areas subject to a Bushfire Attack Level (BAL) not exceeding BAL-12.5 determined in accordance with AS 3959:2018.
14. All flashing including inter-storey junction must be metal flashing.

Scope of certification: The CodeMark Scheme is a building product certification scheme. The rules of the Scheme are available at the ABCB website www.abcb.gov.au. This Certificate of Conformity is to confirm that the relevant requirements of the Building Code of Australia (BCA) as claimed against have been met. The responsibility for the product performance and its fitness for the intended use remain with the certificate holder. The certification is not transferrable to a manufacturer not listed on Appendix A of this certificate.

Disclaimer: The Scheme Owner, Scheme Administrator and Scheme Accreditation Body do not make any representations, warranties or guarantees, and accept no legal liability whatsoever arising from or connected to, the accuracy, reliability, currency or completeness of any material contained within this certificate; and the Scheme Owner, Scheme Administrator and Scheme Accreditation Body disclaim to the extent permitted by law, all liability (including negligence) for claims of losses, expenses, damages and costs arising as a result of the use of the product(s) referred to in this certificate.

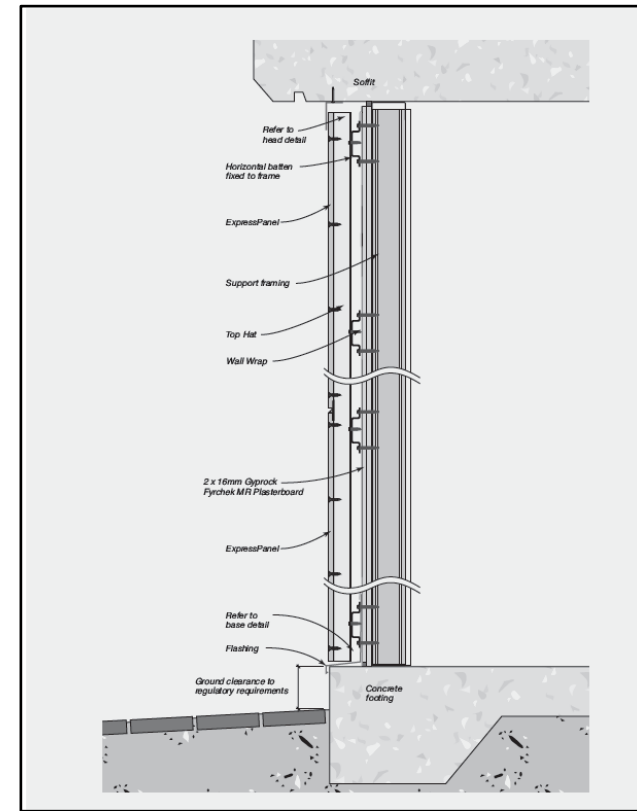
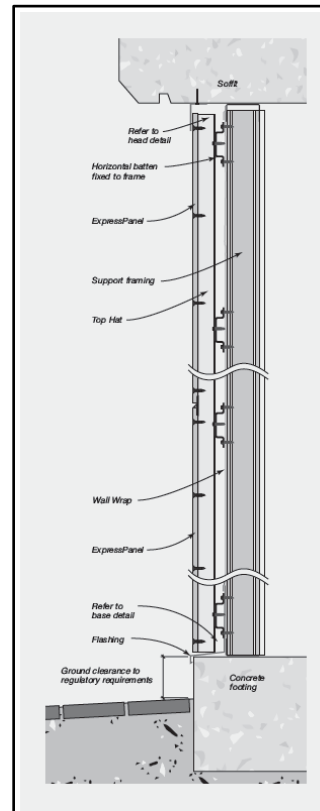
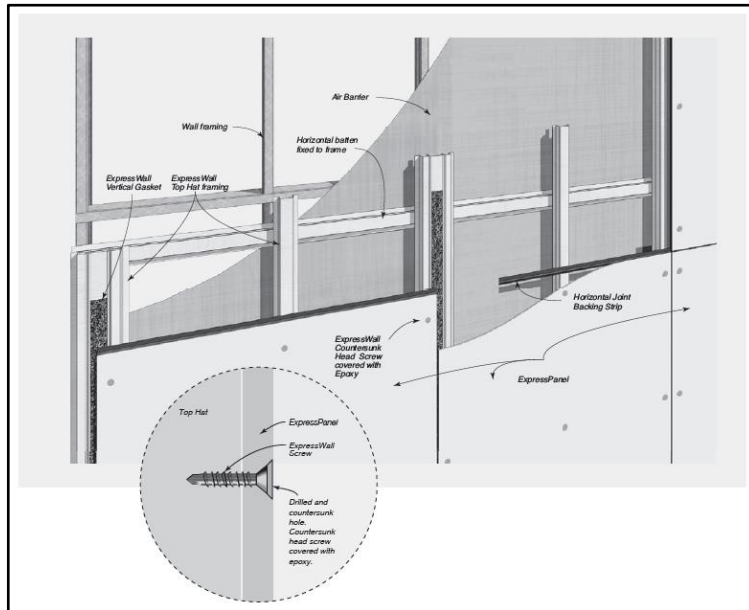
APPENDIX A – PRODUCT TECHNICAL DATA

A1 Type and intended use of product

Refer to Page 1 of this certificate.

A2 Description of product

Refer to Page 1 of this certificate and the below diagrams.



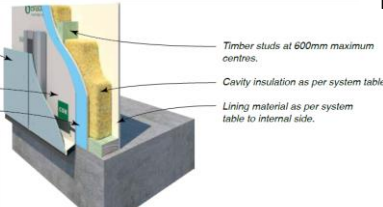
A3 Product specification

Commercial ExpressPanel® panels are pre-primed, square-edged, compressed fibre cement panels. The panels are available in a range of sizes and can be either factory painted or finished onsite. Below are some physical properties of fibre cement and system specifications.

PANEL - DIMENSIONAL & GEOMETRICAL CHARACTERISTICS			
Dimensional/Geometrical Characteristic	Specification	Manufacturing Tolerance	Relevant Standard
Panel Dimensions	900mmW x 1800mmL x 9mmD 900mmW x 2400mmL x 9mmD 900mmW x 3000mmL x 9mmD 1200mmW x 1800mmL x 9mmD 1200mmW x 2100mmL x 9mmD 1200mmW x 2400mmL x 9mmD 1200mmW x 2700mmL x 9mmD 1200mmW x 3000mmL x 9mmD	Width +0 -2 mm Length +0 -2 mm Thickness +0.9 -0 mm	
Profile	Square Edge		
Perpendicularity/squareness of edges	1mm/linear meter		
Weight (typical)	17.8kg/m ²		
Layout Options	Horizontal, Vertical, Diagonal/AL, Curved		
Jointing	Expressed		

Certificate of Conformity

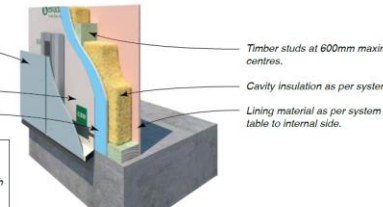
SYSTEM SPECIFICATIONS Cemintel ExpressWall – With Cavity – Timber Frame F28



NOTE: Acoustic performance valid for 35mm wide studs at 600mm centres. The system thermal R-values provided have been calculated based on a thermal transmission path through the wall cavity and does not allow for the effects of thermal bridging. *ACR = Axial Capacity Reduction.

SYSTEM SPECIFICATION			ACOUSTIC REPORT: PKA-A119					
FRL Report	SYSTEM N°	WALL LININGS	STUD DEPTH mm		70		90	
			CAVITY INFILL (Refer to TABLE B6)	R _w / R _w +C _{tr}	R _t (sum) / R _t (win)	R _w / R _w +C _{tr}	R _t (sum) / R _t (win)	
30/30/30 (from outside only) FC 12969	CSR 5851	EXTERNAL WALL SIDE • 1 x 16mm Gyprock Fyrchek MR Plasterboard.	(b) 90 Gold Batts R2.0	-	-	46/36	2.2/2.4	
		INTERNAL WALL SIDE • 1 x 6mm CeminiSeal Wallboard.	(c) 90 Gold Batts R2.5	-	-	47/37	2.6/2.9	
		(d) 75 Gold Batts R2.0	45/35	2.1/2.2	46/36	2.3/2.5		
Min. Wall Thickness mm			135		155			
30/30/30 (from both sides) FC 12969	CSR 5854	EXTERNAL WALL SIDE • 1 x 13mm Gyprock Fyrchek MR Plasterboard.	(b) 90 Gold Batts R2.0	-	-	45/34	2.2/2.4	
		INTERNAL WALL SIDE • 1 x 13mm Gyprock Fyrchek Plasterboard.	(c) 90 Gold Batts R2.5	-	-	46/35	2.6/2.9	
		(d) 75 Gold Batts R2.0	44/33	2.1/2.3	45/34	2.3/2.5		
Min. Wall Thickness mm			139		159			
90/90/90 (from outside only) FC 12969	CSR 5857	EXTERNAL WALL SIDE • 2 x 13mm Gyprock Fyrchek MR Plasterboard.	(b) 90 Gold Batts R2.0	-	-	46/35	2.2/2.4	
		INTERNAL WALL SIDE • 1 x 10mm Gyprock Plus Plasterboard.	(c) 90 Gold Batts R2.5	-	-	47/36	2.6/2.9	
		(d) 75 Gold Batts R2.0	45/34	2.2/2.3	46/35	2.4/2.6		
Min. Wall Thickness mm			149		169			
60/60/60* (from outside only) *ACR Group 2 FC 12969	CSR 5860	EXTERNAL WALL SIDE • 1 x 16mm Gyprock Fyrchek MR Plasterboard.	(b) 90 Gold Batts R2.0	-	-	43/32	2.2/2.4	
		INTERNAL WALL SIDE • 1 x 10mm Gyprock Plus Plasterboard.	(c) 90 Gold Batts R2.5	-	-	44/33	2.6/2.9	
		(d) 75 Gold Batts R2.0	42/31	2.1/2.3	43/32	2.3/2.5		
Min. Wall Thickness mm			139		159			
60/60/60* (from outside only) *ACR Group 2 FC 12969	CSR 5862	EXTERNAL WALL SIDE • 1 x 16mm Gyprock Fyrchek MR Plasterboard.	(b) 90 Gold Batts R2.0	-	-	45/34	2.2/2.4	
		INTERNAL WALL SIDE • 1 x 10mm Gyprock Aquachek Plasterboard.	(c) 90 Gold Batts R2.5	-	-	46/35	2.6/2.9	
		(d) 75 Gold Batts R2.0	44/33	2.1/2.3	45/34	2.3/2.5		
Min. Wall Thickness mm			139		159			

SYSTEM SPECIFICATIONS Cemintel ExpressWall – With Cavity – Timber Frame F29



NOTE: Acoustic performance valid for 35mm wide studs at 600mm centres. The system thermal R-values provided have been calculated based on a thermal transmission path through the wall cavity and does not allow for the effects of thermal bridging. *ACR = Axial Capacity Reduction.

SYSTEM SPECIFICATION			ACOUSTIC REPORT: PKA-A119					
FRL Report	SYSTEM N°	WALL LININGS	STUD DEPTH mm		70		90	
			CAVITY INFILL (Refer to TABLE B6)	R _w / R _w +C _{tr}	R _t (sum) / R _t (win)	R _w / R _w +C _{tr}	R _t (sum) / R _t (win)	
60/60/60 (from both sides) FC 12969	CSR 5865	EXTERNAL WALL SIDE • 1 x 16mm Gyprock Fyrchek MR Plasterboard.	(b) 90 Gold Batts R2.0	-	-	47/37	2.2/2.4	
		INTERNAL WALL SIDE • 1 x 16mm Gyprock Fyrchek Plasterboard.	(c) 90 Gold Batts R2.5	-	-	48/38	2.6/2.9	
		(d) 75 Gold Batts R2.0	46/36	2.2/2.3	47/37	2.4/2.6		
Min. Wall Thickness mm			145		165			
120/120/120 (from outside only) FC 12969	CSR 5872	EXTERNAL WALL SIDE • 2 x 16mm Gyprock Fyrchek MR Plasterboard.	(b) 90 Gold Batts R2.0	-	-	47/36	2.2/2.4	
		INTERNAL WALL SIDE • 1 x 10mm Gyprock Plus Plasterboard.	(c) 90 Gold Batts R2.5	-	-	48/37	2.6/2.9	
		(d) 75 Gold Batts R2.0	46/35	2.2/2.4	47/36	2.4/2.6		
Min. Wall Thickness mm			155		175			
120/120/120 (from both sides) FC 12969	CSR 5874	EXTERNAL WALL SIDE • 2 x 16mm Gyprock Fyrchek MR Plasterboard.	(b) 90 Gold Batts R2.0	-	-	52/43	2.2/2.4	
		INTERNAL WALL SIDE • 2 x 16mm Gyprock Fyrchek Plasterboard.	(c) 90 Gold Batts R2.5	-	-	53/44	2.6/2.9	
		(d) 75 Gold Batts R2.0	51/42	2.3/2.5	52/43	2.6/2.7		
Min. Wall Thickness mm			177		197			



Certificate of Conformity

A4 Manufacturer and manufacturing plant(s)

A5 Installation requirements

Refer to Page 3 of this certificate and Cemintel Commercial ExpressPanel-External Design & Installation Guide-Feb2024 V2.

A6 Other relevant technical data

- Technical Datasheets for Bradford Thermoseal™ Wall Wrap, Bradford Thermoseal™ Firespec Wall Wrap, Enviroseal ProctorWrap (CW/CW-IT) Wall Wrap, and Enviroseal ProctorWrap (RW) Wall Wrap with nominal thickness <1.0mm for all products.
- Technical Datasheet for Bradford Acoustigard partition rolls.

APPENDIX B – EVALUATION STATEMENTS

B1 Evaluation methods

The system has been assessed as complying with the identified Performance Requirements of the NCC 2022 BCA Volumes 1 and 2. This involved a review of product specifications, test reports, installation manuals, and associated documentation.

1. Structural assessment:

- Volumes 1 & 2 – A2G2(2)(a)/A5G3(1)(d) – A report issued by an Accredited testing Laboratory – Cyclone Testing Station, James Cook University (NATA accreditation No. 14937)
- Volumes 1 & 2 – A2G2(2)(a)/A5G3(1)(e) – A report from a professional engineer (David Beneke Consulting).

2. Weatherproofing assessment:

- Volumes 1 & 2 – A2G2(2)(a)/A5G3(1)(d) – A report issued by an Accredited testing Laboratory – Ian Bennie and Associates (NATA accreditation No. 2371)
- Volumes 1 & 2 – A2G2(2)(a)/A5G3(1)(e) – A report from an appropriately qualified person (XAVIER KNIGHT).

3. Fire Resistance assessment:

- Volumes 1 & 2 – A2G3(2)(a)/A5G3(1)(d) – An assessment report issued by an Accredited testing Laboratory – BRANZ Ltd (IANZ accreditation No. 37).

4. Non-Combustibility assessment:

A. Barestone Fibre Cement (General Concessions)

- Volumes 1 & 2 – A2G3(2)(a)/A5G3(1)(f) – Another form of documentary evidence – by exemption/product specification.

B. Sarking-type material

- Volumes 1 & 2 – A2G3(2)(a)/A5G3(1)(d) – A report issued by an Accredited testing Laboratory – Insulation Research Laboratory (NATA accreditation No. 993).
- Volumes 1 & 2 – A2G3(2)(a)/A5G3(1)(d) – A report issued by an Accredited testing Laboratory – AWTA Product Testing (NATA accreditation No. 1356).

C. Insulation material

- Volumes 1 & 2 – A2G3(2)(a)/A5G3(1)(d) – A report issued by an Accredited testing Laboratory – Insulation Research Laboratory (NATA accreditation No. 993).
- Volumes 1 & 2 – A2G3(2)(a)/A5G3(1)(e) – An assessment report from an appropriately qualified person – CSIRO.

5. Fire Hazard Properties assessment:

- Volume 1 – A2G3(2)(a)/A5G3(1)(e) – An assessment report from an appropriately qualified person – Warringtonfire Australia Pty Ltd.

6. Construction in Bushfire Prone Areas assessment:

- Volumes 1 & 2 – A2G3(2)(a)/A5G3(1)(f) – Another form of documentary evidence (assessment against specifications in the referenced document – AS 3959:2018).

B2 Reports

Evaluation methods	Related Supporting Evidence as listed below
Structural Assessment	Numbers 1 – 3
Weatherproofing Assessment	Numbers 4 – 6
Fire Resistance assessment	Numbers 7 – 8
Non-Combustibility	Numbers 9 – 18
Fire Hazard Properties assessment	Number 19
Resistance to Bushfire Construction assessment	Number 20

Structure

- 1. Cyclone Testing Station, James Cook University, Connection Testing, Cyclic Simulated Wind Load Strength Testing, and Assessment of the Cyclic Wind Load Capacity of CSR Cemintel Creative Façade System, Report No. TS1055 Revision A (dated: 26 April 2017).**

This document contains the test results of a Cemintel Creative Façade (8mm & 9mm nominal thickness) and connection testing for resistance to simulated cyclic wind load, carried out in accordance with AS 4040.3.
- 2. David Beneke Consulting, Engineering Report for Certification of CSR ExpressWall Façade System, Report No. 2013-28-LO-163 Revision 15 (dated 18 March 2023).**

This document certifies the maximum top hat spans and spacings of ExpressWall façade system (with either ExpressWall panels or Barestone pre-coated panels) in accordance with normal engineering practice and principals, test methods and the relevant Australian Standards.
- 3. Cyclone Testing Station, James Cook University, Test Report for Simulated Wind Load Component Testing, Report No. TS923 (dated 9 October 2013).**

This report contains the test results and provides an assessment for the capacity of the screw connections used in the CSR ExpressWall Façade system by undertaking cyclic pull-out load testing on the exposed head screw connections between the fibre cement cladding and the supporting batten carried out in accordance with AS 4040.3.

Weatherproofing

- 4. Ian Bennie and Associates, Test Report for Air Infiltration, Water Penetration and Structural of Cemintel Creative Façade System, Report No. 2016-108-S1-R3 (updated 31 October 2023).**

This document contains the test results of the Cemintel Creative Façade System for Structural SLS, Air Infiltration, Water Penetration, and Structural ULS carried out in accordance with AS/NZS 4284:2008.

5. Ian Bennie and Associates, Test Report for Ultimate Load Capacity, Report No. 2016-066-S2 (dated 8 November 2016).

This document contains the test results of Bradford Enviroseal ProctorWrap CW-IT without external cladding to determine the ultimate load capacity (Structural ULS) of the wrap alone carried out in accordance with AS/NZS 4284:2008.

6. XAVIER KNIGHT, Weatherproofing Assessment for Cemintel Expressed Joint External Wall Systems (Surround, Barestone, ExpressPanel), XK230919 Revision 03 (dated 19 September 2023).

This document confirms the compliance of this product with AS 4284:2008, based on the test results of Report Nos. 2016-108-S1 & 2016-066-S2, by Ian Bennie and Associates.

Fire Resistance

7. BRANZ, Assessment Report for Fire Resistance of CSR Steel Framed Wall Systems, Report No. FC12946-01-08 Issue 8 (dated: 23 February 2023).

This document contains the fire assessment results of the CSR steel framed system for resistance to fire, carried out in accordance with AS 1530.4:2014.

8. BRANZ, Assessment Report for Fire Resistance of CSR Timber Framed Walls, Report No. FC12969-01 Issue 2 (dated: 5 October 2022).

This document contains the fire assessment results of the CSR timber framed system for resistance to fire, carried out in accordance with AS 1530.4:2014.

Non-Combustibility

A. Sarking-type material

9. CSR Insulation Research Laboratory, Test Report for Flammability Index Assessment of Bradford Thermoseal[®] Wall Wrap, Test Report NR-17201 (dated: 1 May 2017).

This test report provides the test results of testing Bradford Thermoseal[®] Wall Wrap to AS 1530.2:1993 and returned a result of Flammability Index 1.

10. AWTA Product Testing, Test Report for Flammability Index of Enviroseal ProctorWrap (RW) Wall Wrap, Test No. 22-001559 (dated: 25 May 2022).

This test report provides the test results of testing ProctorWrap residential wall (RW) to AS 1530.2:1993 and returned a result of Flammability Index 1.

11. AWTA Product Testing, Test Report for Flammability Index of Enviroseal (RW Plus) Wall Wrap, Test No. 21-002455 (dated: 28 May 2021).

This test report provides the test results of testing Enviroseal (RW Plus) to AS 1530.2:1993 and returned a result of Flammability Index 1.

12. AWTA Product Testing, Test Report for Flammability Index of Enviroseal ProctorWrap (CW) Wall Wrap, Test No. 22-001560 (dated: 20 May 2022).

This test report provides the test results of testing ProctorWrap commercial wall (CW) to AS 1530.2:1993 and returned a result of Flammability Index 1.

13. CSR Insulation Research Laboratory, Test Report for Flammability Index Assessment of Bradford Thermoseal[®] Firespec Wall Wrap, Test Report NR-16213 (dated: 20 December 2016).

This test report provides the test results of testing Bradford Thermoseal[®] Firespec Wall Wrap to AS 1530.2:1993 and returned a result of Flammability Index 0.

B. Insulation

14. CSIRO, Assessment Report for combustibility of Bradford Glasswool insulation batts, Assessment Number FCO-2812/4643 Revision B (dated: 16 December 2019).

This report provides an assessment of Bradford Glasswool insulation batts (density range of 6.3kg/m³ to 26.8kg/m³) and determined the product was not deemed combustible when tested to the requirements of AS 1530.1:1994.

15. CSR Insulation Research Laboratory, Combustibility Test of CSR Bradford Gold, Report No. NR-18006 (dated: 13 August 2018).

This report contains the results of testing 90mm CSR Bradford Gold® R2.5 Wall Batt (mean density 20.5kg/m³) to EN ISO1182/AS 1530.1 and determined the product was not deemed combustible when tested to the requirements of AS 1530.1:1994.

16. CSR Insulation Research Laboratory, Combustibility Test of CSR Bradford Gold, Report No. NR-18007 (dated: 28 August 2018).

This report contains the results of testing 90mm CSR Bradford Gold® R2.0 Wall Batt (mean density 10.4kg/m³) to EN ISO1182/AS 1530.1 and determined the product was not deemed combustible when tested to the requirements of AS 1530.1:1994.

17. CSR Insulation Research Laboratory, Combustibility Test of CSR Bradford Gold, Report No. NR-20004 (dated: 11 September 2020).

This report contains the results of testing 75mm CSR Bradford Gold® R2.0 Wall Batt (mean density 17.3kg/m³) to EN ISO1182/AS 1530.1 and determined the product was not deemed combustible when tested to the requirements of AS 1530.1:1994.

18. CSR Insulation Research Laboratory, Combustibility Test of CSR Bradford Gold, Report No. NR-22112 (dated: 28 July 2022).

This report contains the results of testing 90mm CSR Bradford Gold® R2.7 Wall Batt (mean density 33.11kg/m³) and determined the product was not deemed combustible when tested to the requirements of AS 1530.1:1994.

Fire Hazard Properties

19. Warringtonfire, Assessment Report for Group Number and Smoke Growth Rate Index (SMOGRARC), Report No. 45759 Revision 12 (dated 26 October 2022).

This report shows the assessment undertaken to determine the likely fire hazard properties of the CSR wall and ceiling lining products and determined CSR plasterboard products are likely to achieve Group 1 classification and $SMOGRARC \leq 0.5m^2s^{-2} \times 1000$ and CSR Cemintel fibre cement panels (including ExpressPanel® 9mm) are likely to achieve Group 1 classification and $SMOGRARC \leq 0.2m^2s^{-2} \times 1000$ if tested in accordance with AS ISO 9705:2003 (R2016) and assessed in accordance with AS5637.1:2015.

Resistance to Bushfire Attack

20. Cemintel® Product Guide for Bushfire-Prone Areas (dated November 2023).

This guide provides information on Cemintel® wall cladding products and systems to meet the requirements of each BAL when assessed against specifications in AS 3959:2018.